

$e^b - / \theta$ A child is born

Handwritten musical score for the song "A child is born". The score is written on ten staves, with the first seven staves containing musical notation and the last three staves being empty. The notation includes notes, rests, and various chords. The chords are labeled as follows:

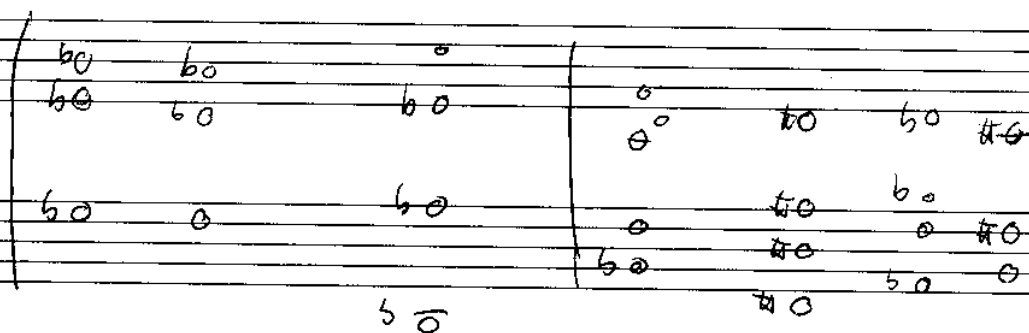
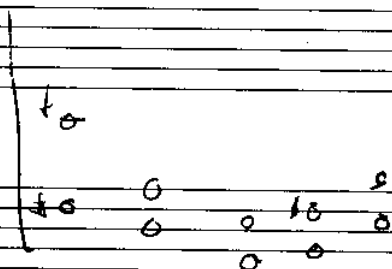
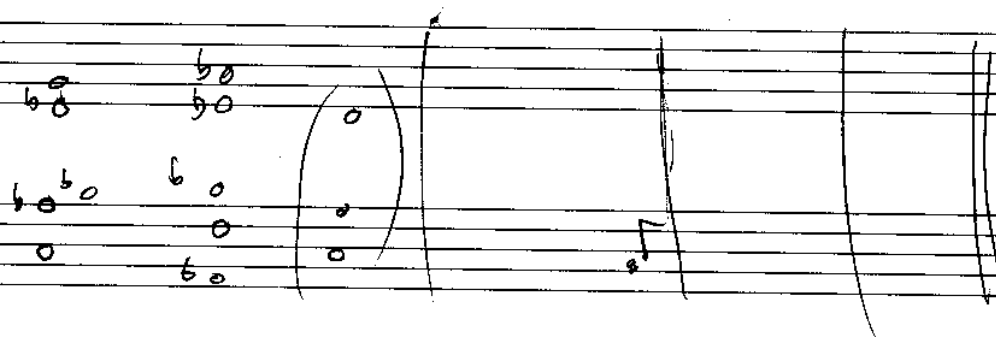
- Staff 1: $e^b - / \theta$
- Staff 2: $A\phi$ and D
- Staff 3: G^- and $D7$
- Staff 4: G^- and $C7$
- Staff 5: B^b and C^b
- Staff 6: B^b7 and F^b
- Staff 7: A^b7 and $C7$
- Staff 8: B^b and F^b7
- Staff 9: G^- and $C7$
- Staff 10: C^-

The score concludes with a double bar line and a repeat sign on the seventh staff.

BET YOU CAN

4 FIND ME

2



Chorus F# D A B E 4x

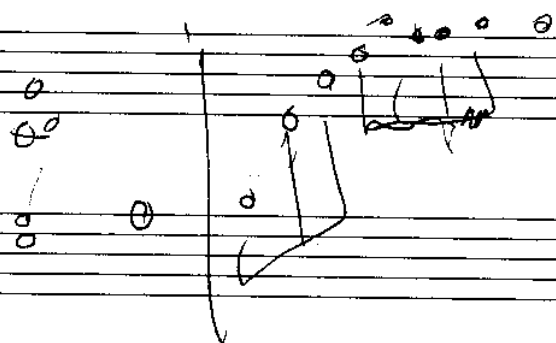
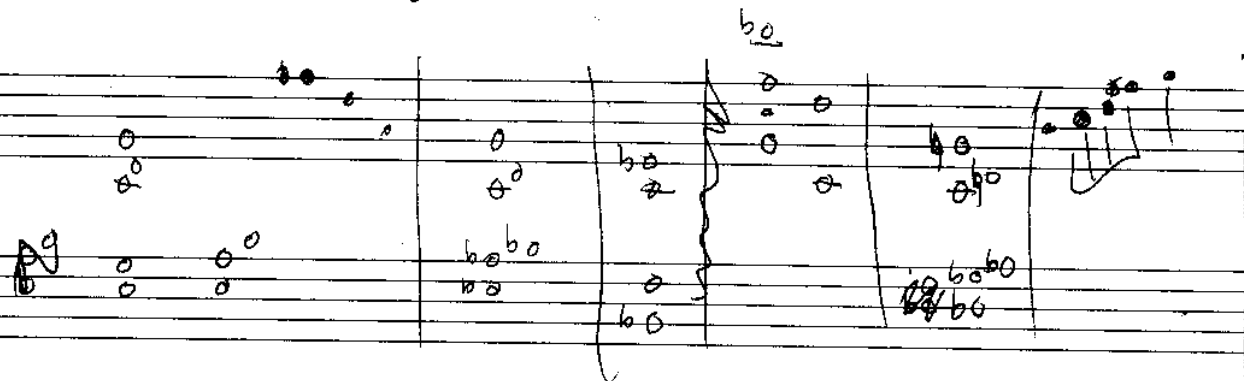
verse to chorus

verse outtro chorus

Bridge chorus outtro

BET YOU CANT FIND ME

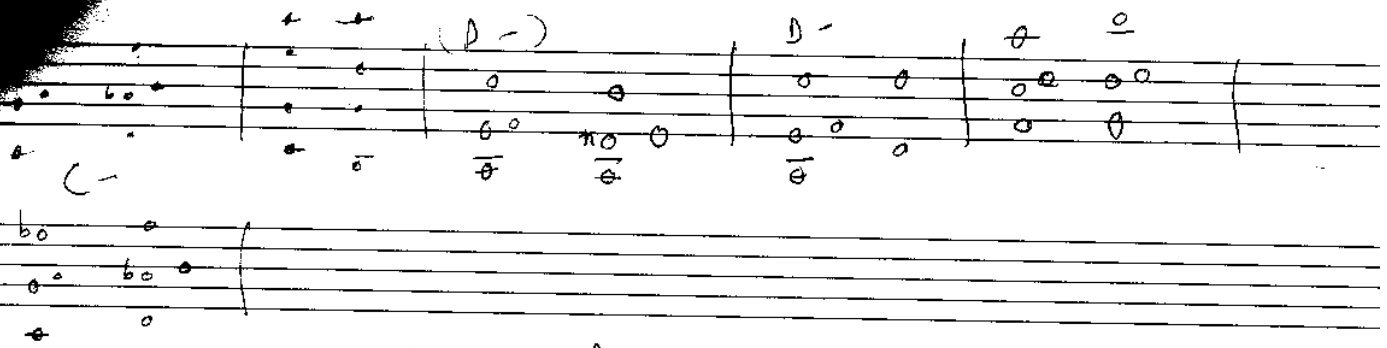
Biddies mark 3



BIDDIES MARK 3

Block 2 Ann. b

D-



double melody versions

D-7

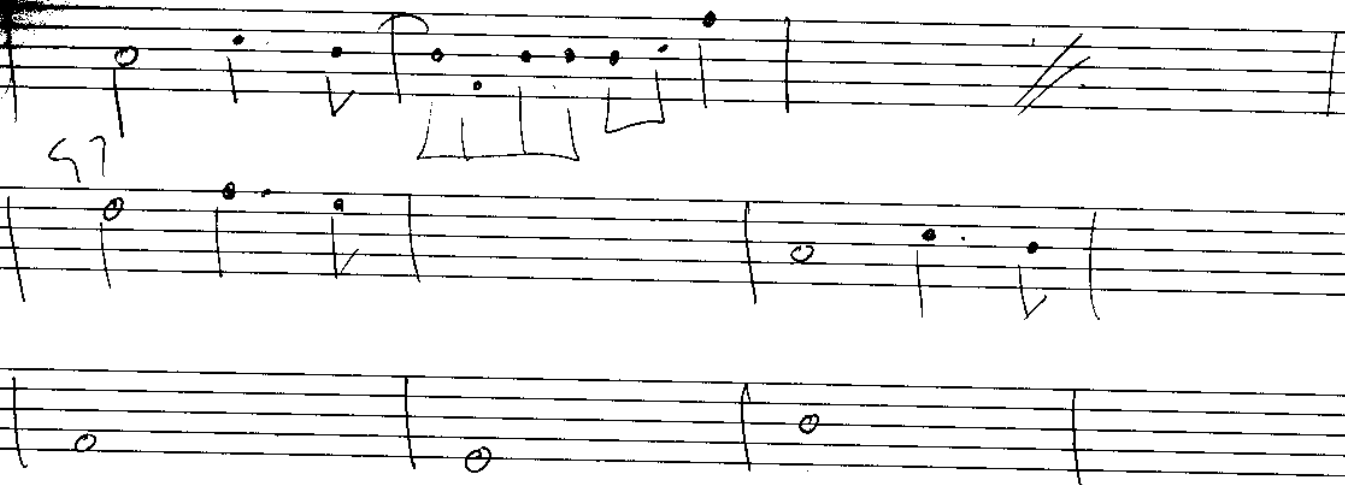
<D7



Don't scan

BLUES

D7



Dewey Square

bird

Handwritten musical notation on two staves. The first staff contains a melody with notes and rests, with a key signature of one flat (Bb) and a common time signature (C). The second staff contains a bass line with notes and rests, including a triplet of eighth notes. Above the second staff, the following sequence is written: E^b | 3 4 #4 5 4 3 2.

Handwritten musical notation on a single staff, showing a continuation of the melody with notes and rests.

Handwritten musical notation on a single staff, showing a continuation of the melody with notes and rests.

Handwritten musical notation on a single staff, showing a continuation of the melody with notes and rests.

Handwritten musical notation on a single staff, showing a continuation of the melody with notes and rests.

Handwritten musical notation on a single staff, showing a continuation of the melody with notes and rests.

Handwritten musical notation on a single staff, showing a continuation of the melody with notes and rests.

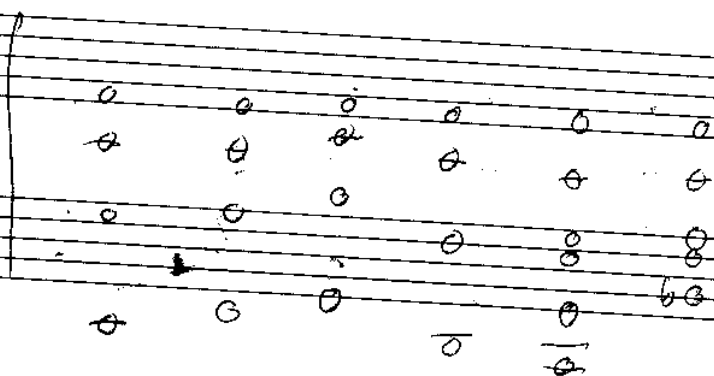
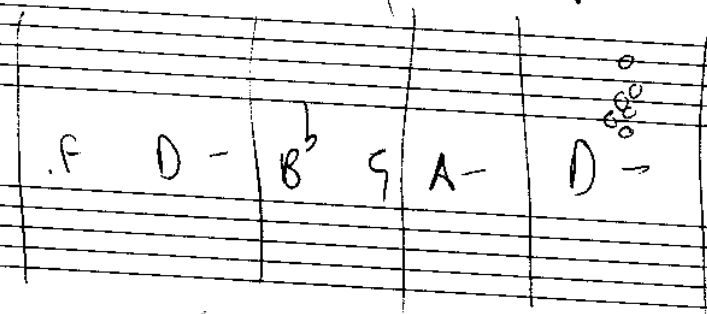
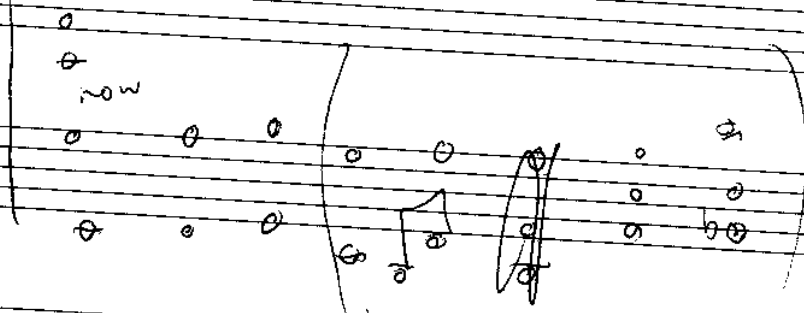
Handwritten musical notation on a single staff, showing a continuation of the melody with notes and rests.

Handwritten musical notation on a single staff, showing a continuation of the melody with notes and rests.

Handwritten musical notation on a single staff, showing a continuation of the melody with notes and rests.

Handwritten musical notation on a single staff, showing a continuation of the melody with notes and rests.

Follow 2



but I didnt follow thru

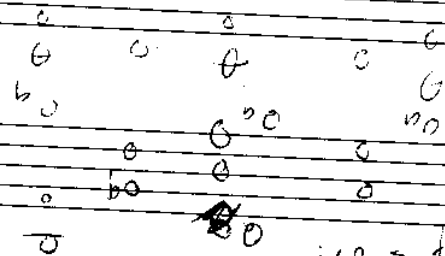
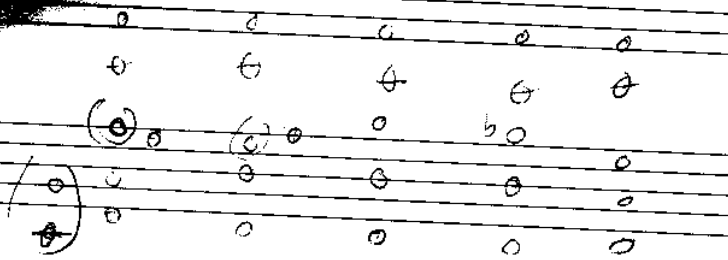
Its always the same

will I always be the same alone

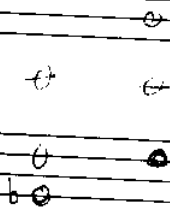
thats what I wonder

Follow

I got plans for you



up - take for
bridge

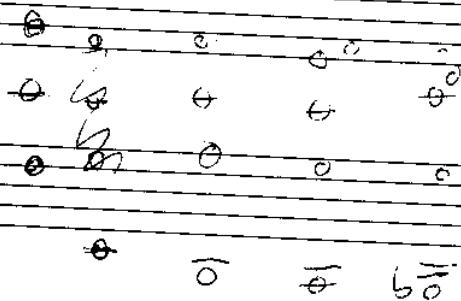


you are
there ~~she~~ was a train

safe behind the paper

you
does ~~she~~ feel the same

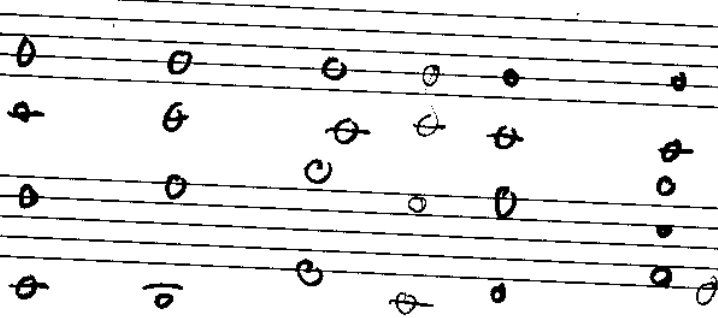
I ^{that is her} wonder?



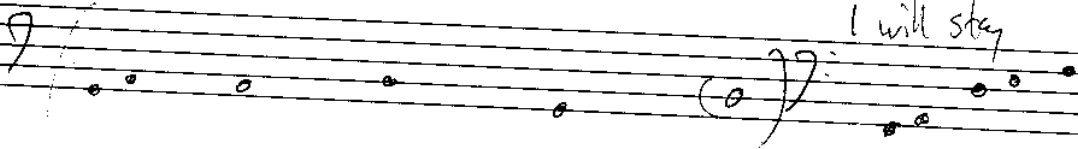
I got plans for you

but I aint gonna ask ya

* I aint gonna leave your side
* now and forever



I will stay



FRIED CHICKEN

phump
and a smattering
of

vocal

6. blues 40 000 years
grace

EA7 ~~100~~ E² / B⁶

fried chicken and drum machine

D - growth

GET IT page 1

Bridge

no repeat

Verse 8 bars

Bridge 4 bars

pre chorus

chorus

B-9 no3 C9 no3 E-11 F B7 E7

D6 A6 B6sus E6sus D6 A6

1 Verse 8 bars | Bridge 4 bars | pre chorus | chorus | bridge 16 bars | 2x chorus

Handwritten musical score on five staves. The notation includes various notes, rests, and accidentals. Chord symbols are written above the staves, including $Bb6 no3$, $C9 no3$, $E-/A E^b$, $G E^b$, $C Csus$, $A-11$, $F B7 E^b7$, D^b , A^b , $E^b9 no3$, D^b , A^b , D^b , $Csus$, E^b , D^b , and A^b . A large wavy line is drawn across the third staff. The word "fine" is written at the end of the fifth staff.

then 16 bars of bridge (if.) then 2x choruses

CAN SEE

why cant you see?
~~why cant you see~~

60 0 0 0
0 0 0 0
0 0 0 0

don't say were wrong
I knew it should be

6 0
0 0
0 0 0 0
0 0 0 0

I can see the way

0 0 0
6 0 0 0
0 0 0 0
6 0 0 0

D. F
I have no doubts

can you be sure

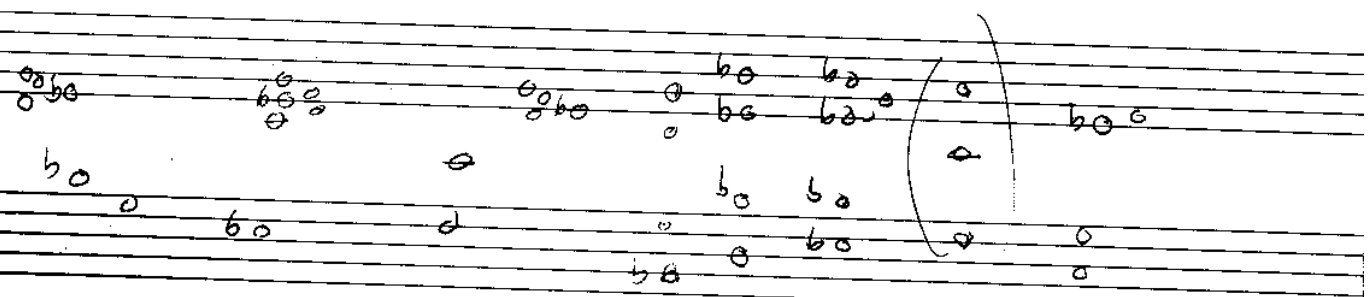
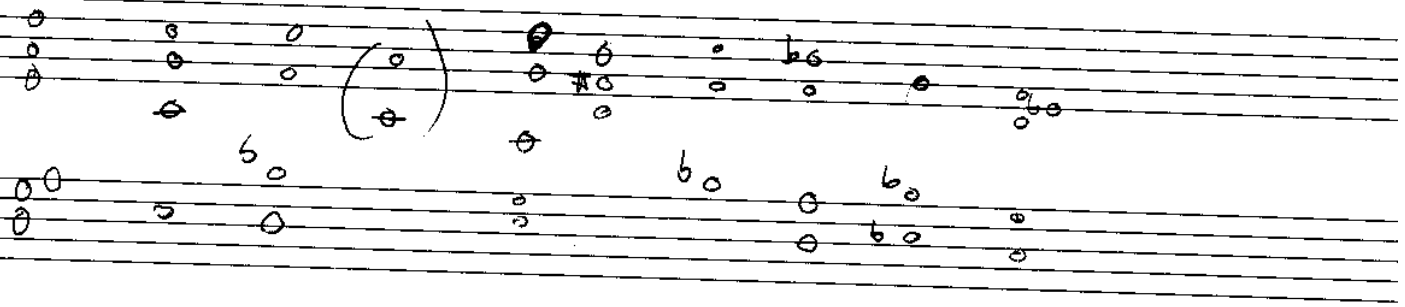
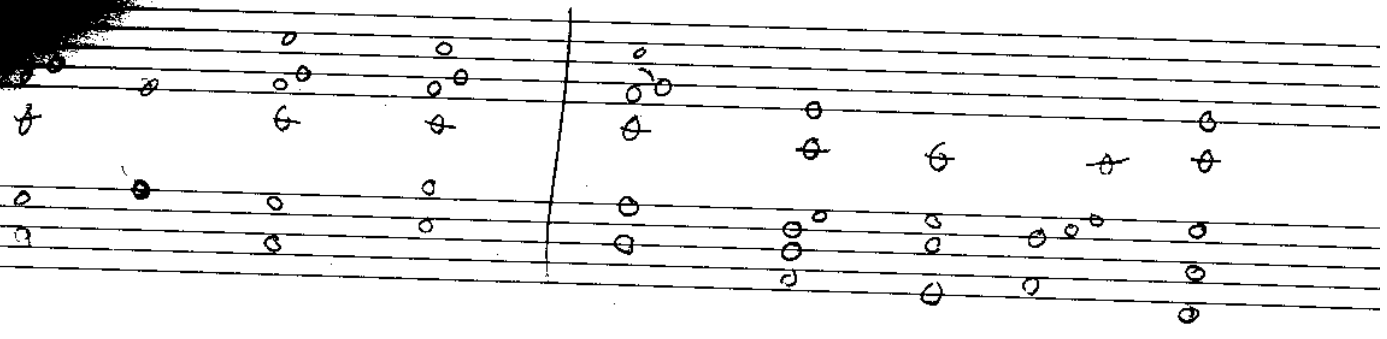
NO 0
0 0 0 0
0 0 0 0
0 0 0 0

what did I do that
I didn't before

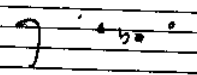
don't tell me ~~there~~ no
cant you just lie

lie for me please
its meant to be.

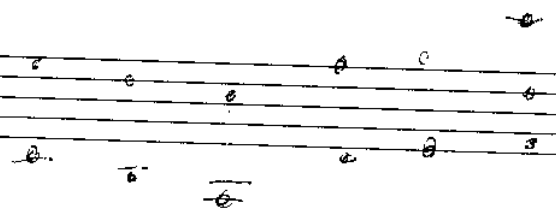
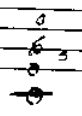
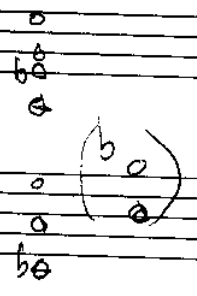
I have the answer, what does it mean



what does it mean to be free

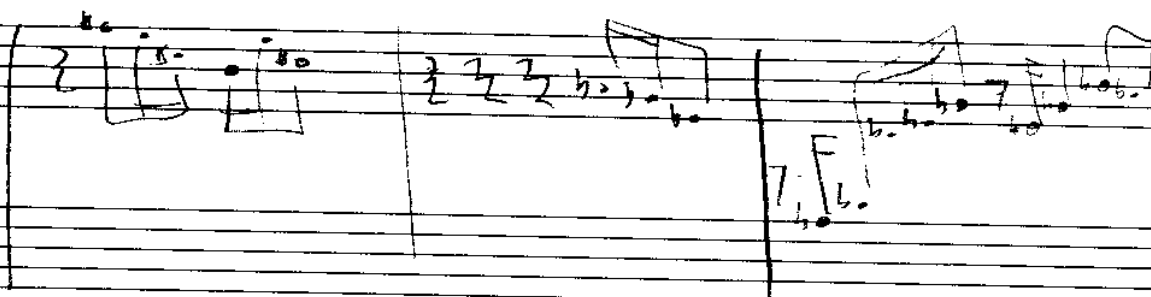
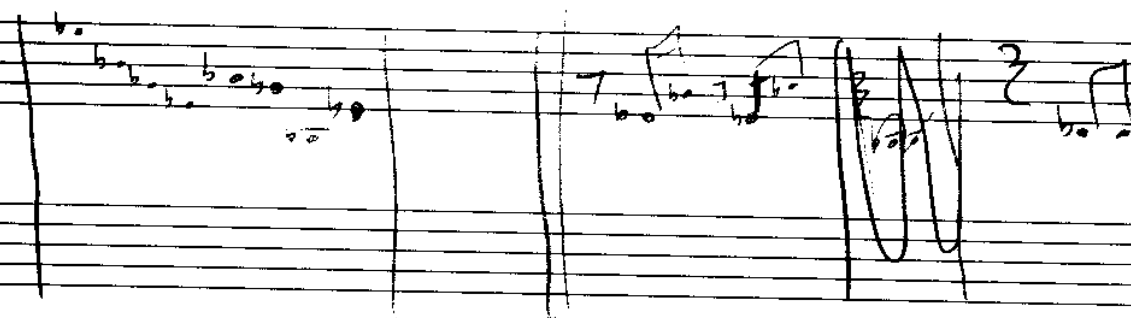
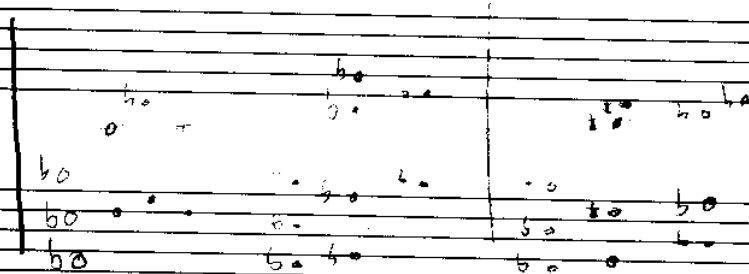
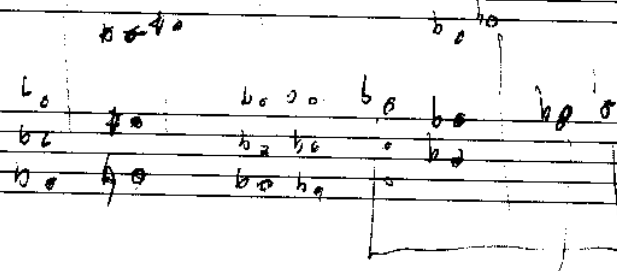
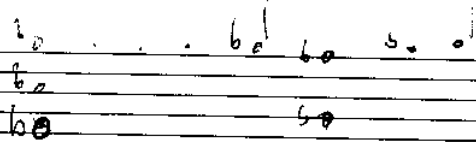


can you see me?

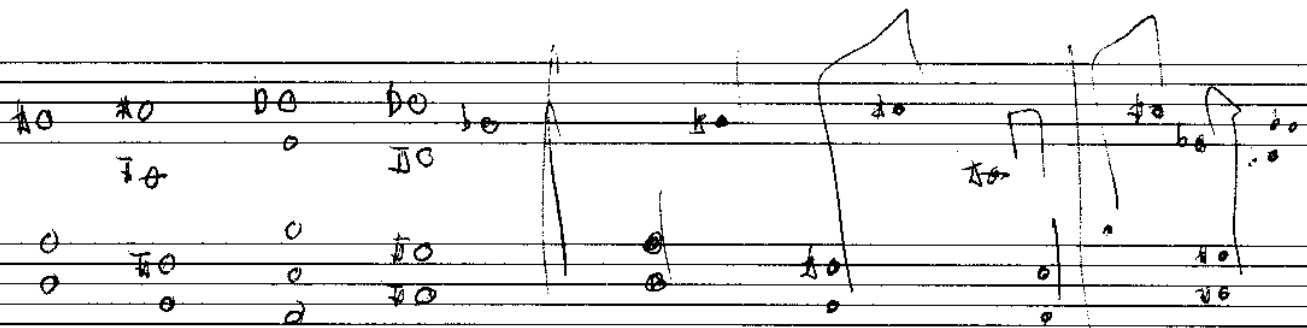
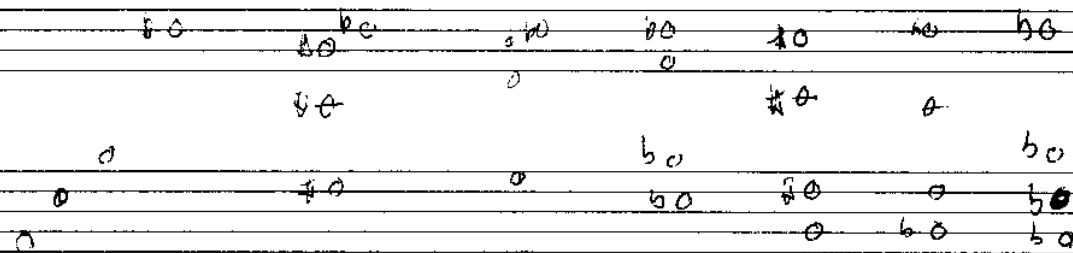


11 July 2

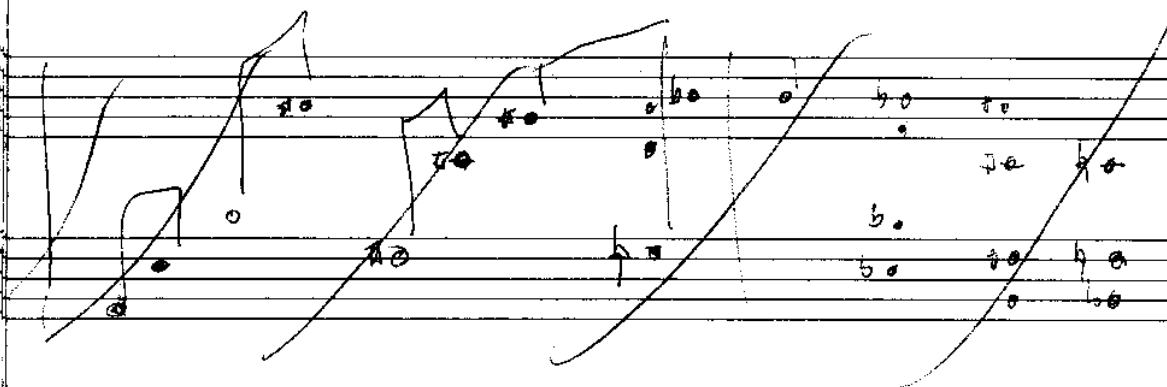
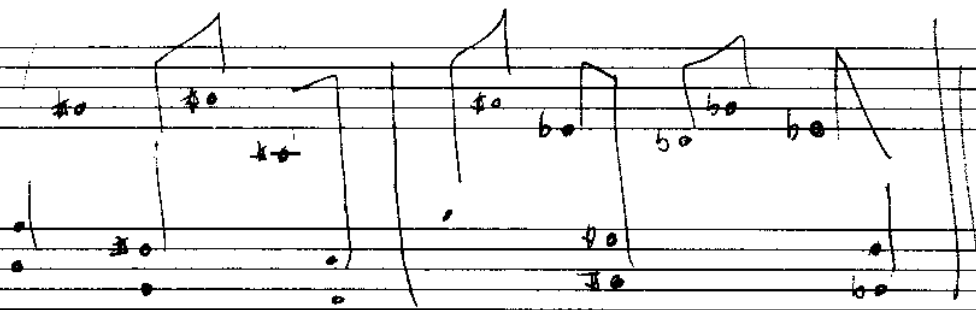
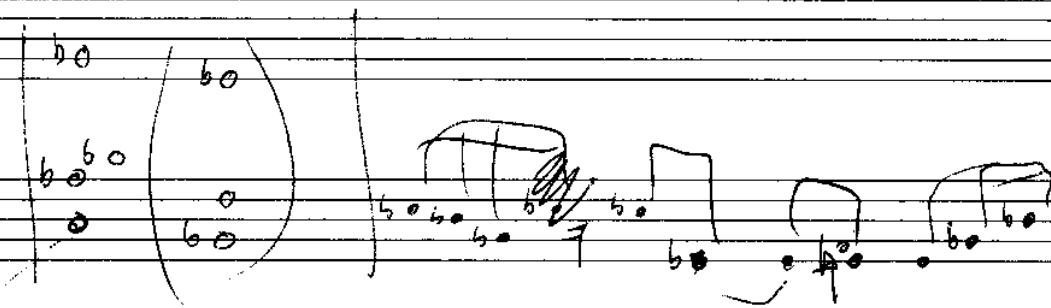
blues



11 July 2007



Handwritten musical notation, possibly a single note or a small group of notes.



D- C G- F/A KIDDOS E^b SUS D^b SUS B/f⁺ D^b/A^s

F#7/A^b B^b SUS (A) E- F#7 B^b SUS

G- B- CA7 F/A B^s G- A- E- A- F#6 G^b F

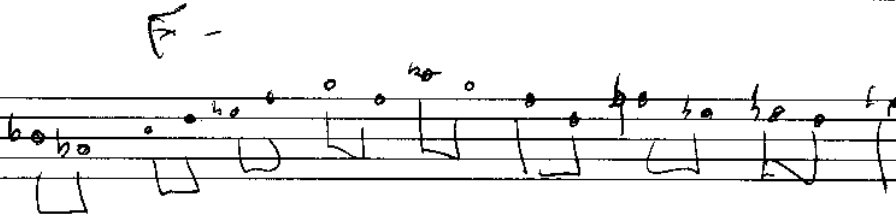
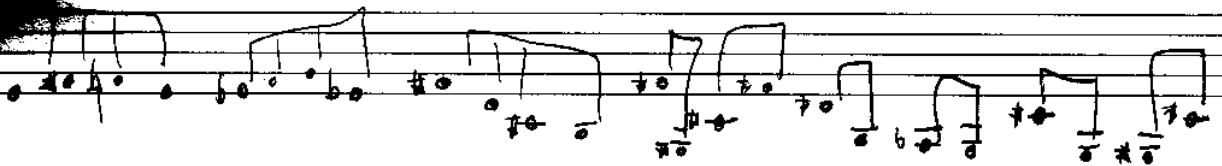
D B- A E- B- CA7 F/A B^s G- D C

A- F#6 G^b A E- A- A-/G

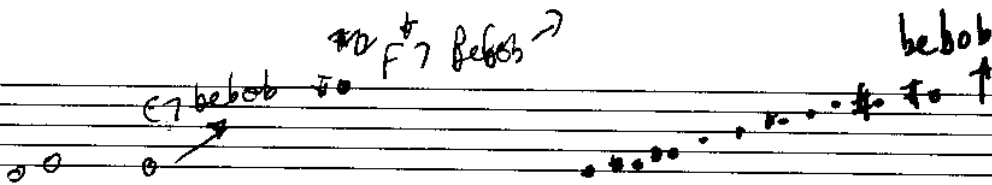
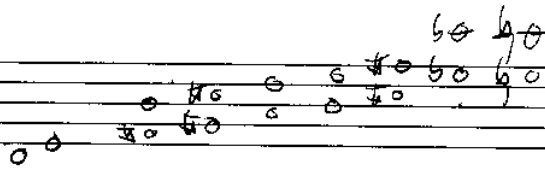
G- B^s CA7 E-

B- A F7+11 B

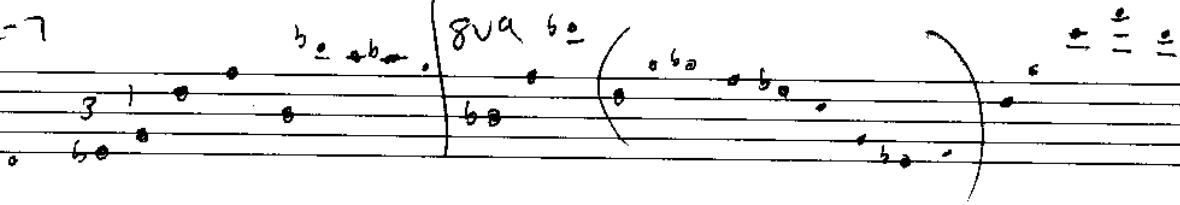
LICKS → calderazzo



E7 bebop scale



C-7



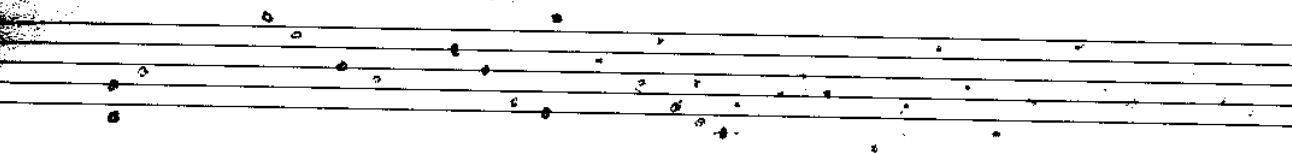
C-7 F7 B^b-7



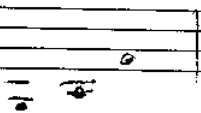
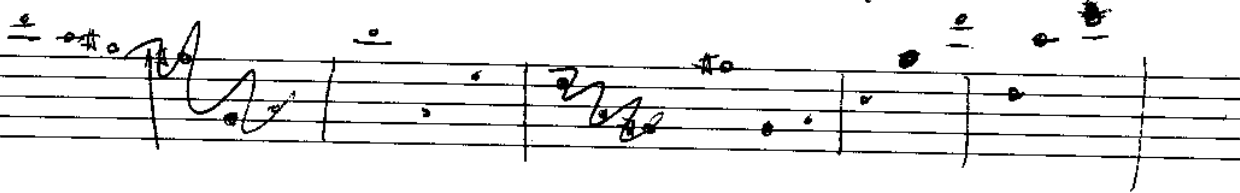
UCKS 2 TRICKS

Dm

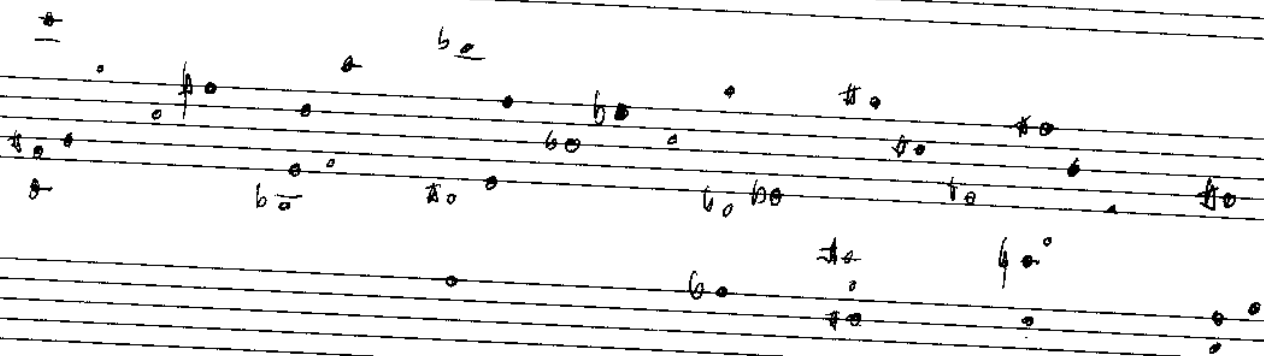
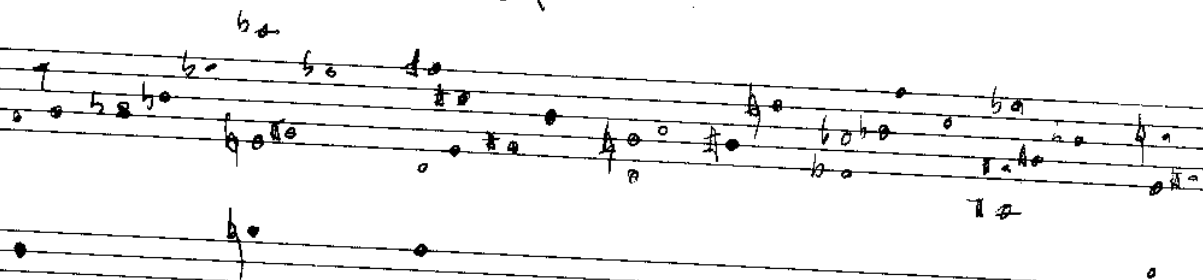
clocks



D



LICKS



E BY FEAR

Chet 4

D- A- Ealt $\frac{C}{B^b}$ B-^{b6} G D- 4X

Handwritten musical score for guitar on a spiral-bound notebook. The score consists of six staves of music. The notation includes various chords, accidentals, and rhythmic markings. Above the staves, there are handwritten notes: "E BY FEAR" and "Chet 4". Between the staves, there are more handwritten notes: "D- A- Ealt $\frac{C}{B^b}$ B-^{b6} G D- 4X", "D- 766)", "A- E7alt $\frac{C}{B^b}$ ", and "D- A- Ealt $\frac{C}{B^b}$ B-^{b6} G". The music is written in a style that appears to be a transcription or a sketch, with some parts being more clearly defined than others. The spiral binding of the notebook is visible on the left side.

D-

LIVE BY fear chart

Page B.
2

Handwritten musical notation for the first system. The top staff contains a melody with a dotted quarter note, an eighth note, and a quarter note, followed by a measure with a quarter note and a half note. The bottom staff contains a bass line with a dotted quarter note, an eighth note, and a quarter note, followed by a measure with a quarter note and a half note. A double bar line is present after the second measure. A large '2' is written above the staff, and a double slash is written below the staff.

D-

Handwritten musical notation for the second system. The top staff contains a melody with a dotted quarter note, an eighth note, and a quarter note, followed by a measure with a quarter note and a half note. The bottom staff contains a bass line with a dotted quarter note, an eighth note, and a quarter note, followed by a measure with a quarter note and a half note. A double bar line is present after the second measure. The notation continues across the system with various notes and rests.

is your hope lost
do you live with fear.
are the greener pastures the ones you left behind

am M

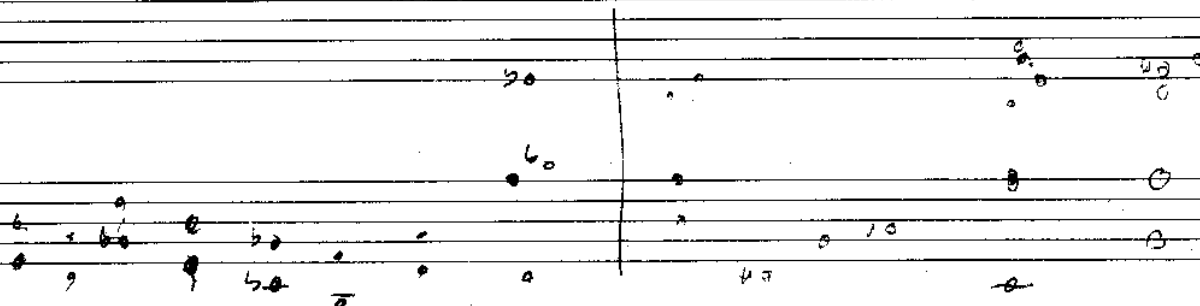
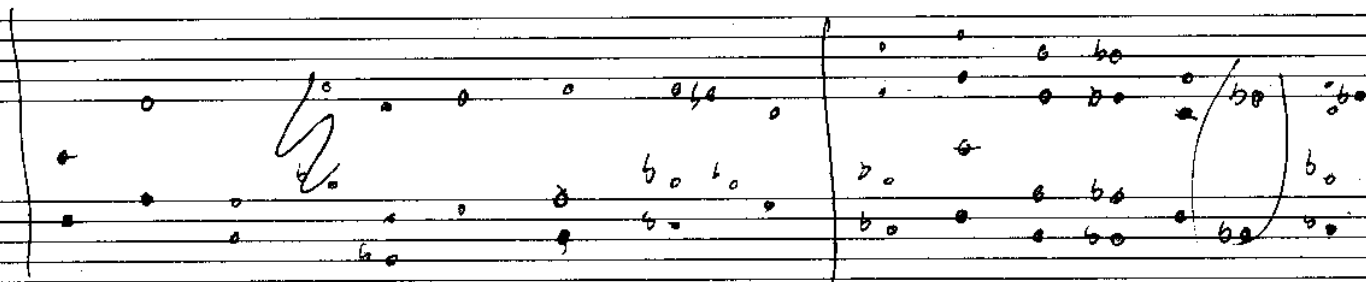
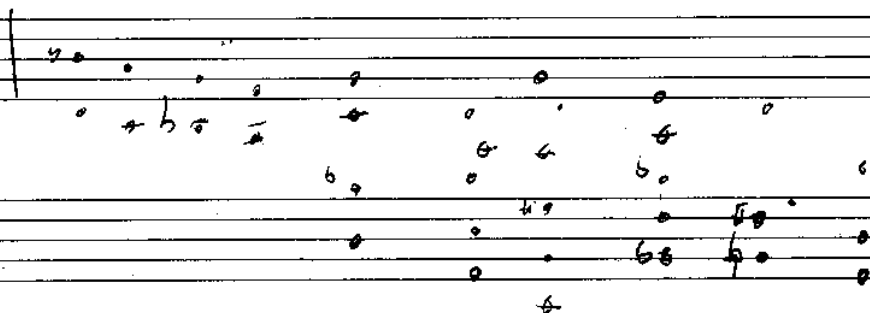
are you condemned to despair
don't get on the same to get intouch with the source

have you become a very
have you disappeared, would you die for a hat

don't get hung up
have a go

LIVE BY FEAR

C F D- C7



is your hope lost

do you live with fear

too

o

2nd

c

o

o

o

o

o

o

o

o

o

o

o

o

o

o

o

are the greener pastures being

to

o

o

o

o

o

o

o

o

o

o

are you condemned to despair, have you disappeared

LIVE WITH FEAR. 2

o

o

o

o

o

o

o

o

o

o

have a go

o

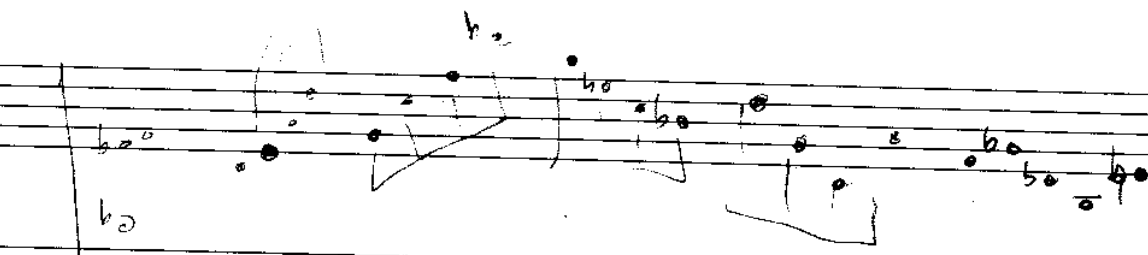
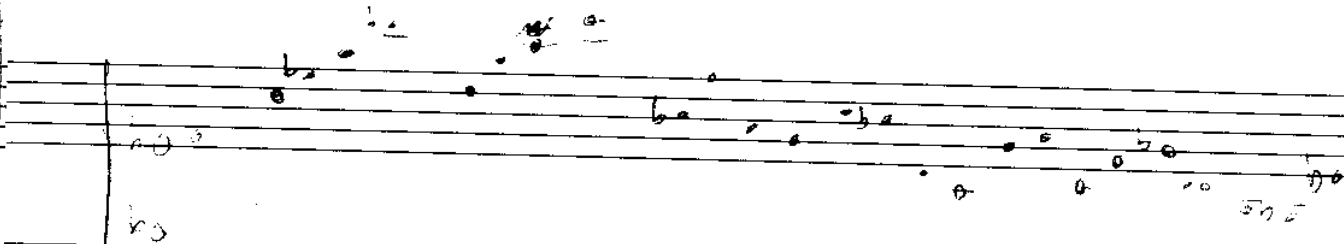
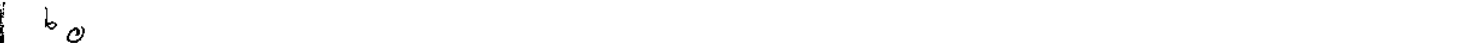
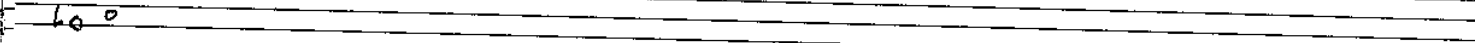
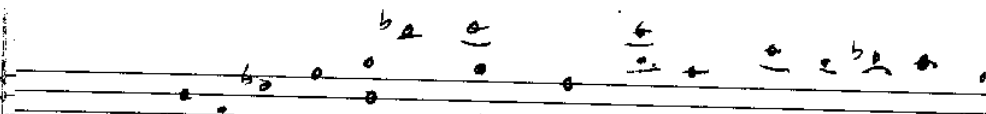
E -

o

o

17

not bad



MCDONALD SONGS



you get so worried about my
feeling, have to get the
bottom of this, I've listened
all yr excuses its the truth I
need, I knew yr thinking it
always be half word &
ill be waitin for you
I know you think my love
is endless but girl that
just ain't true

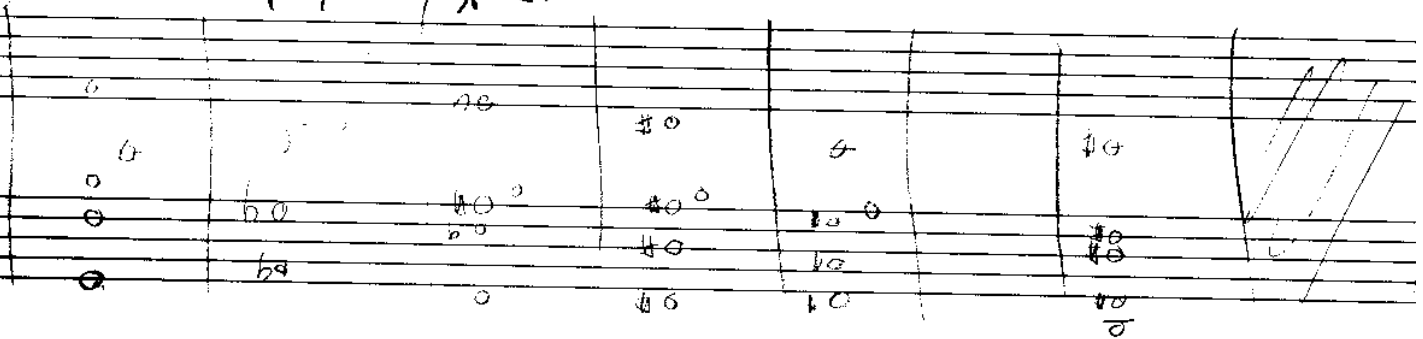
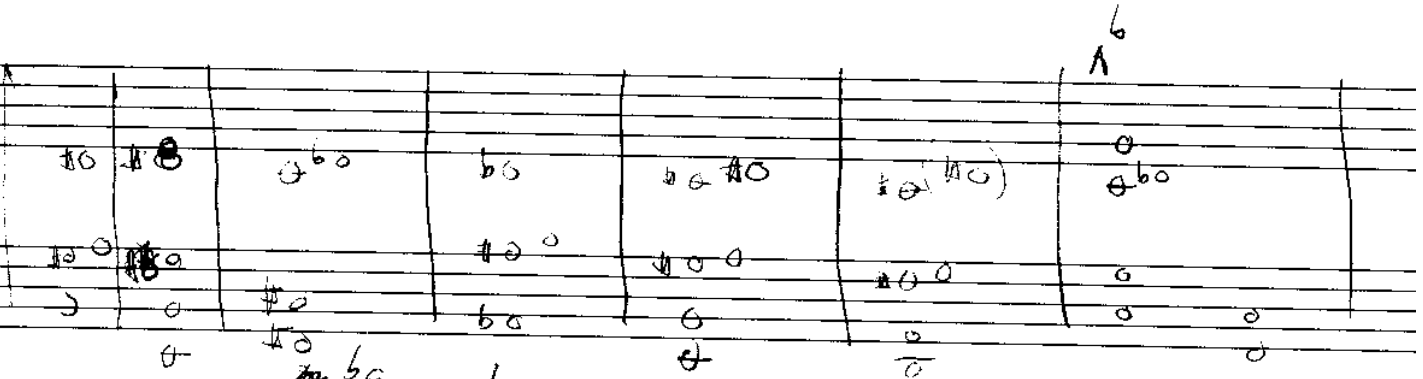
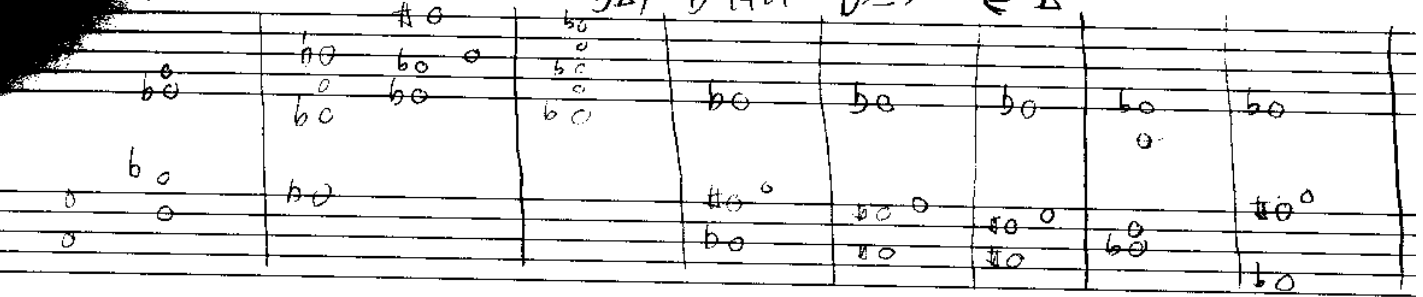
A - D 907/D G F B

E- F# A- DSus F

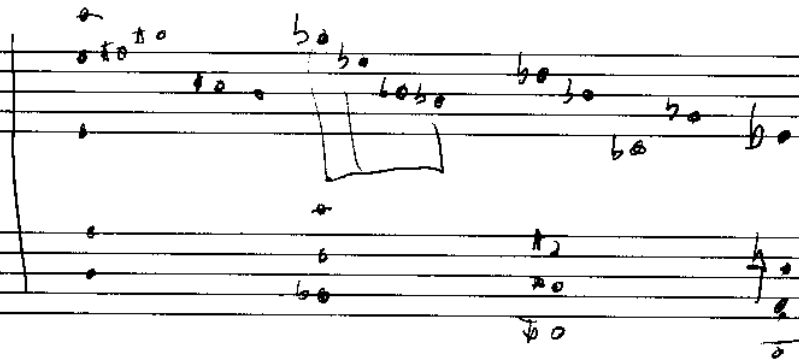
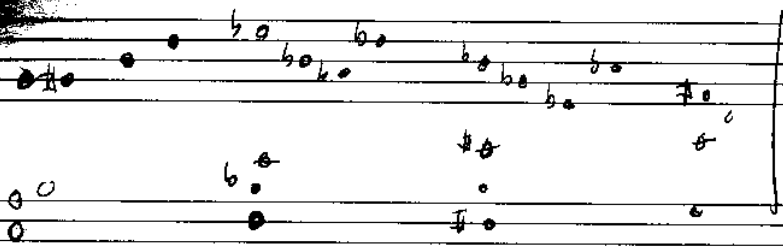
C A- F D- G

so easily said in passin always followed by some way out
you've got me so dizzy I'm wanderin what its
all about all this talk about us & the future
how real is the future you see maybe loves
just a word for one but its important to me
daddy I heard it all before
but I cant give up till I know for sure
oh cant you see I hang on yr every word this ain't
no game I'm playin I really love you
dont promise nothin that ya cant live up to

PSVS ASUS B/E MOGINGLE 2001
D27 D741 D256 E-A



PATTERNS 2



PATTERNS

The image displays six staves of handwritten musical notation. The notation consists of various notes (half notes, quarter notes, eighth notes) and accidentals (sharps, flats, double flats). The patterns are as follows:

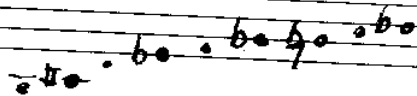
- Staff 1:** A sequence of notes with flats, including a double flat (bb) and a sharp (#).
- Staff 2:** A sequence of notes with flats, including a double flat (bb) and a sharp (#).
- Staff 3:** A sequence of notes with flats, including a double flat (bb) and a sharp (#). The staff ends with the word "etc".
- Staff 4:** A sequence of notes with flats, including a double flat (bb) and a sharp (#).
- Staff 5:** A sequence of notes with flats, including a double flat (bb) and a sharp (#).
- Staff 6:** A sequence of notes with flats, including a double flat (bb) and a sharp (#). The staff ends with a circled group of notes.

Practice giants steps with

Solo using



messia scale



the final countdown

Handwritten musical notation on a spiral-bound notebook page. The notation includes chords and notes across several staves.

Chords and notes written above the staves:

- Staff 1: D/E E- D- A-
- Staff 2: C/E D/E E- D- A-
- Staff 3: B^b/D ~~slur~~ C/D ~~slur~~ D- F/A G7
- Staff 4: C/E D/E E- G G/f[#]
- Staff 5: E5us FΔ7 D- B^bΔ7
- Staff 6: CΔ7/G DΔ7/A E^b7/B^b
- Staff 7: D- A- D- A

The notation includes various musical symbols such as notes, rests, and slurs. The final staff shows a double bar line and a wavy line, indicating the end of the piece.

A/C# B/C# final countdown
C#- B-

F# E



A/C# B/C# C#-

B-

F#

G/B

A/B

B-

D/F#

E7

A/C# B/C# C#-

~~B/C#~~ E

E/D#

C#sus

DΔ7

B-

GΔ7

AΔ7/E

BΔ7/F#

C7/G

B-

F#

B-

F#

B-

F#

B-

F#

UNTIT

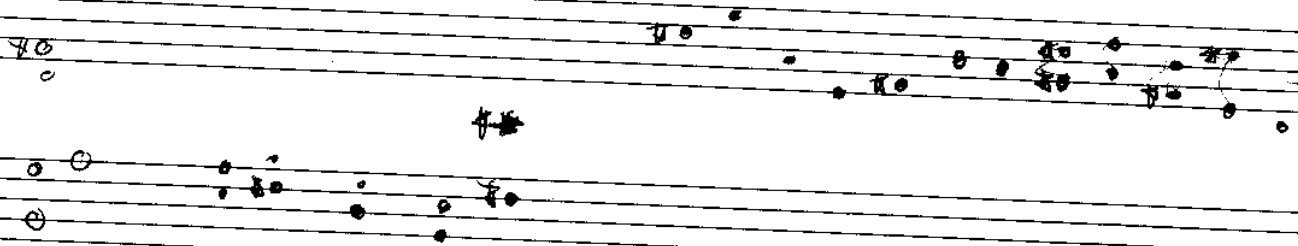
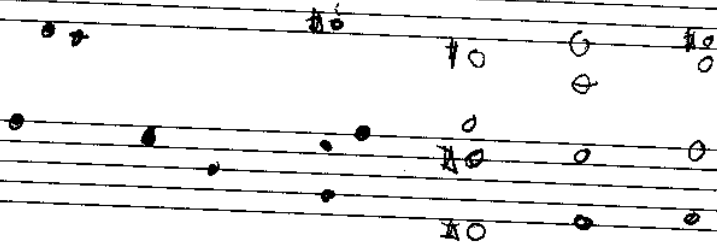
b₀ 0 0
0 0 0 0 0
0 b₀ 0 0
0 0 b₀

0 0 0 b₀
0 b₀ 0 0 0
0 0 0 0 b₀

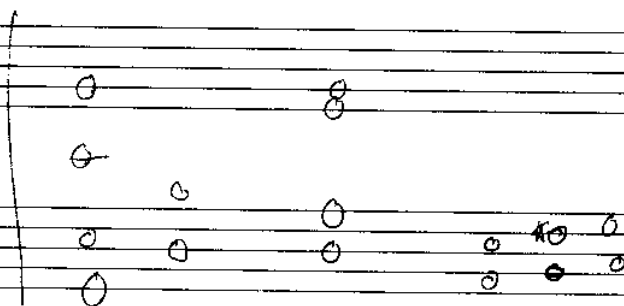
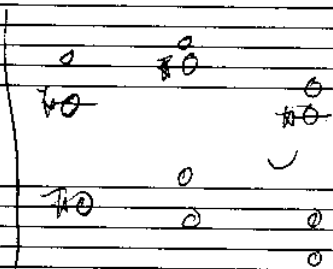
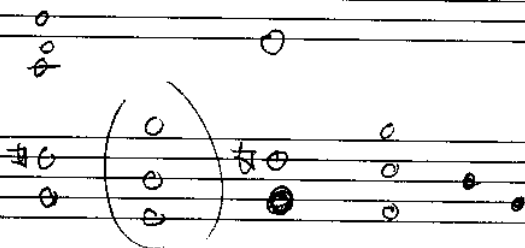
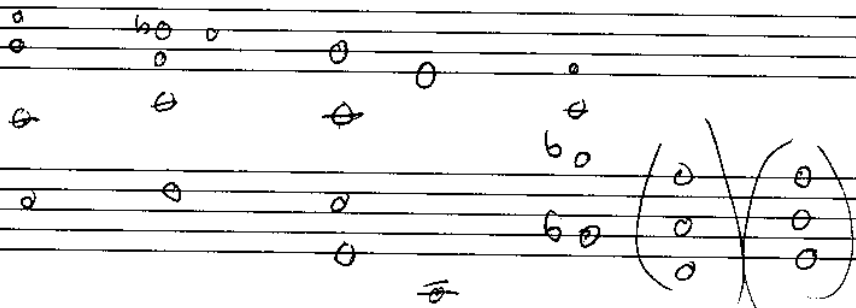
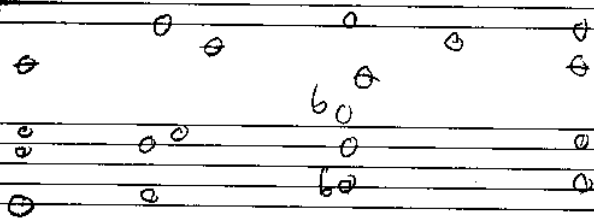
0 0 0 0 0
0 0 0 0 0
0 0 0 0 0
0 0 0 0 0

0 0 0
0 0 0
0 0 0
0 0 0

UNTITLED



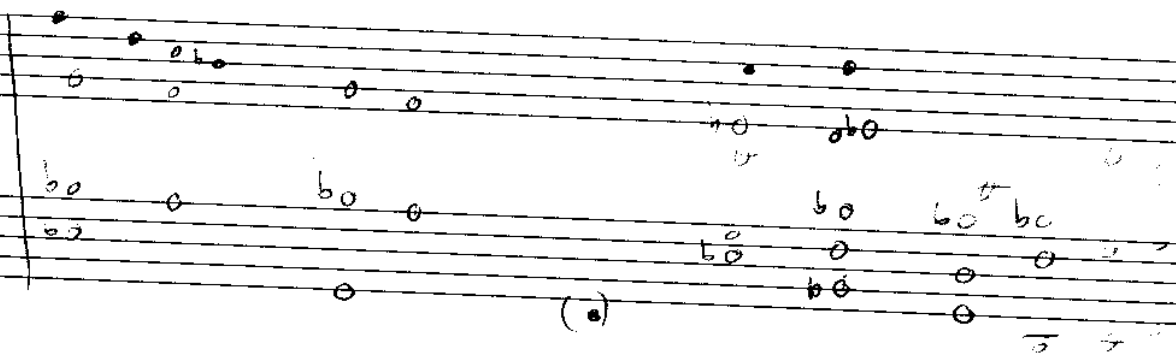
UNIT



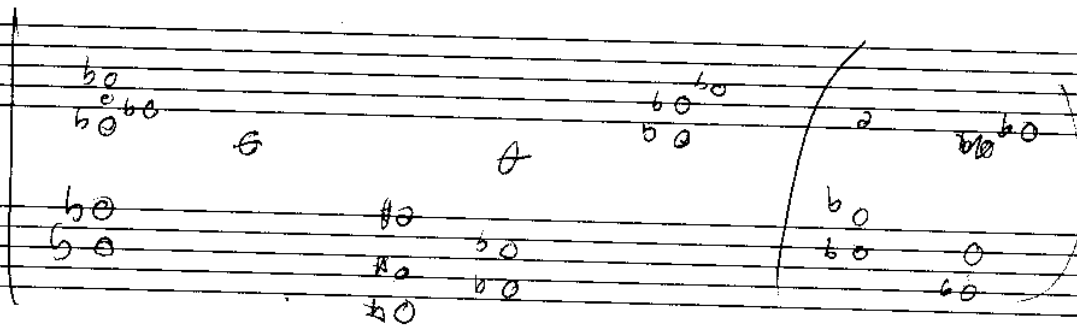
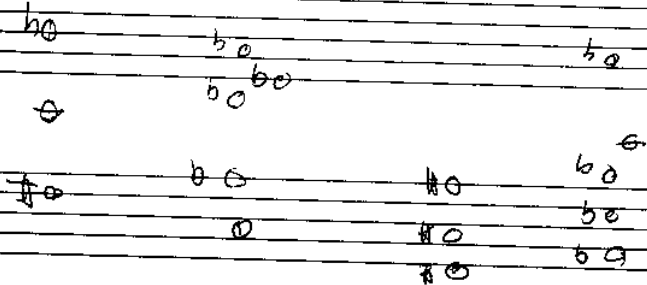
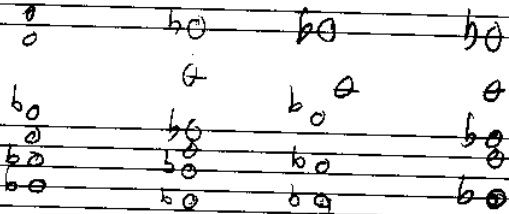
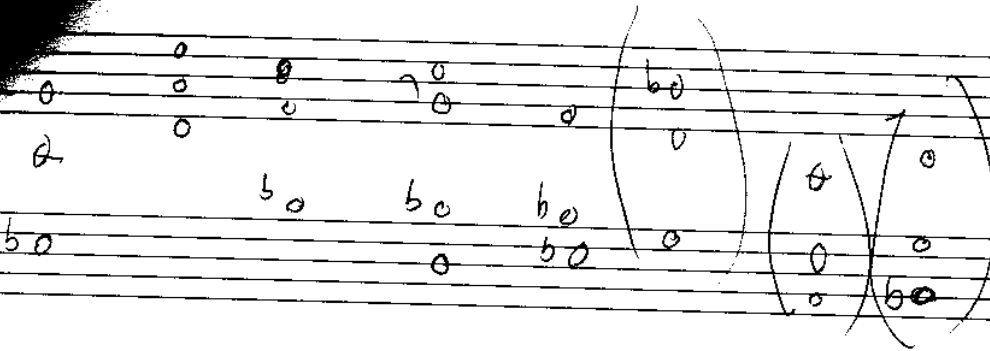
50	0	50
50	0	60

	no	c
o	to	
A o	o do	to o
o	a	to
o	b	to
o		to
J		to

UNTITLED



UNTITLED



7

UNTITLED

o
o

o b o o h o h o
o b o o b o b o

h o o

b o

o

o

o

(o
o
o)

o

o

b o

o

o

o

h o o

o

o

h o

o

o

UNTITLED

0 0 0 0 0 0
0 0 0 0 0
0 0 0 0 0 0
0 0 0 0 0 0
0 0 0 0 0 0

0 0 0 0 0 0 0 0
0 0 0 0 0 0 0 0
0 0 0 0 0 0 0 0
0 0 0 0 0 0 0 0
0 0 0 0 0 0 0 0

0 0 0 0 0 0 0 0
0 0 0 0 0 0 0 0
0 0 0 0 0 0 0 0
0 0 0 0 0 0 0 0
0 0 0 0 0 0 0 0

UNTIL

1

2

b₂
b₀

b₀

b₀

b₀ 7 b₀ 7 b₀

c

b₀

b₀

b₀

b₀

b₀

b₀

b₀

b₀

b₀

b₀

b₀

b₀

b₀

b₀

b₀

b₀

b₀

b₀

b₀ b₀

I can get lost

b₀

b₀

b₀

b₀

b₀

UNTITLED

	o				
o	o	o	o	o	o
o	o	o	o	o	o
		o	o	o	o
			o	o	o

	o	o
bo		
bo	o	o
	o	

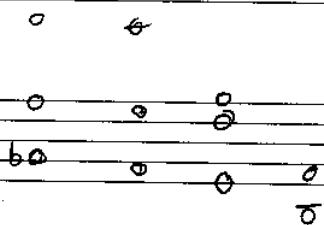
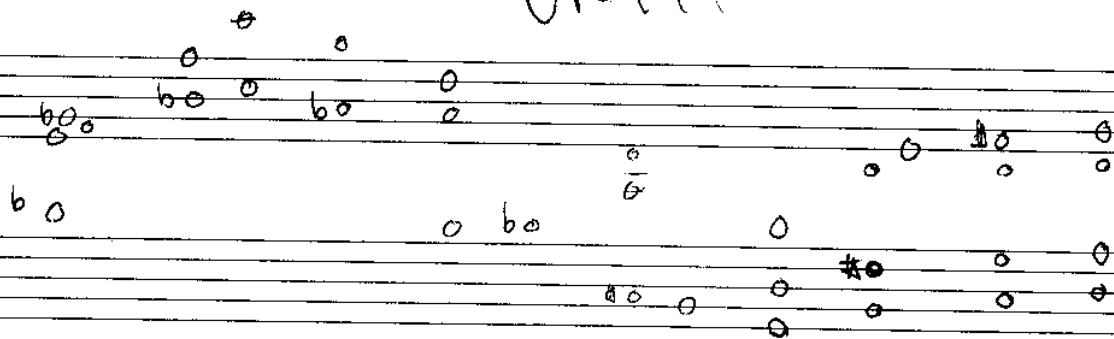
o		o
o	o	o
o	o	o

UNTITLED

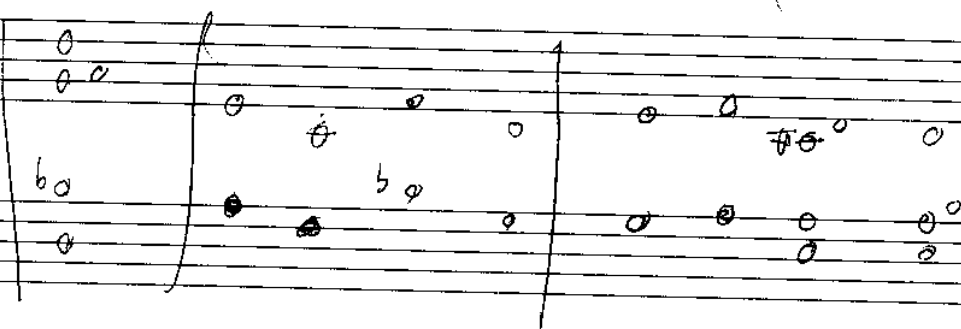
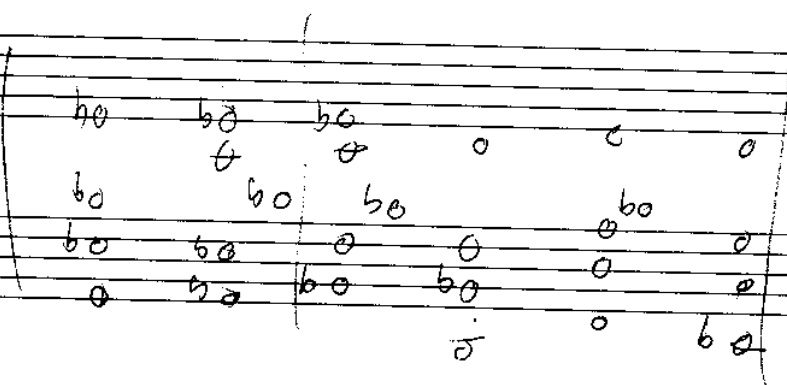
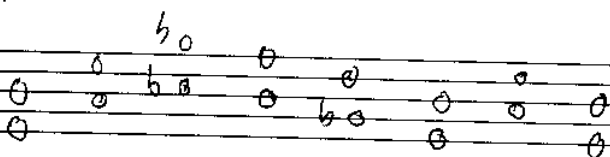
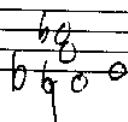
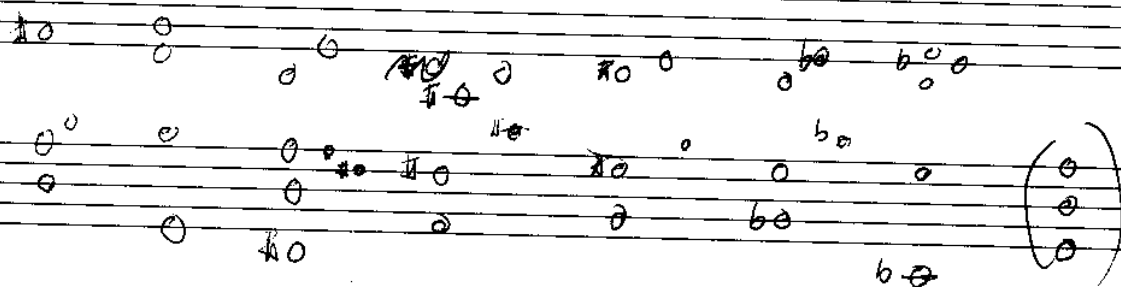
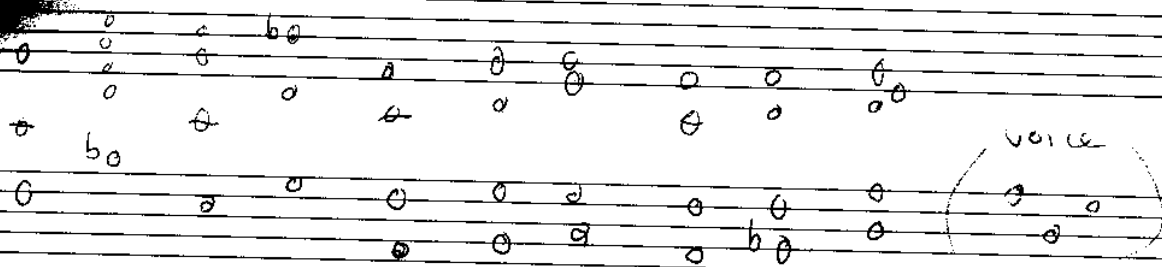
80
64

0 0 60 40 0 0

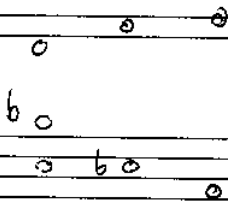
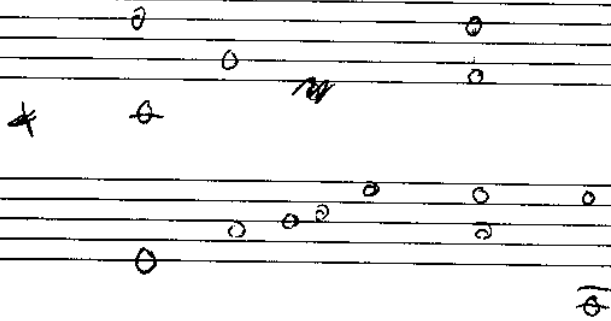
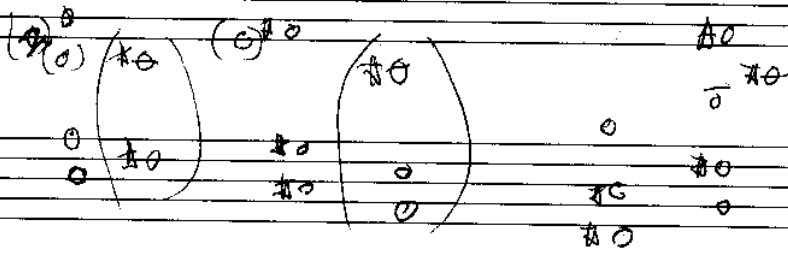
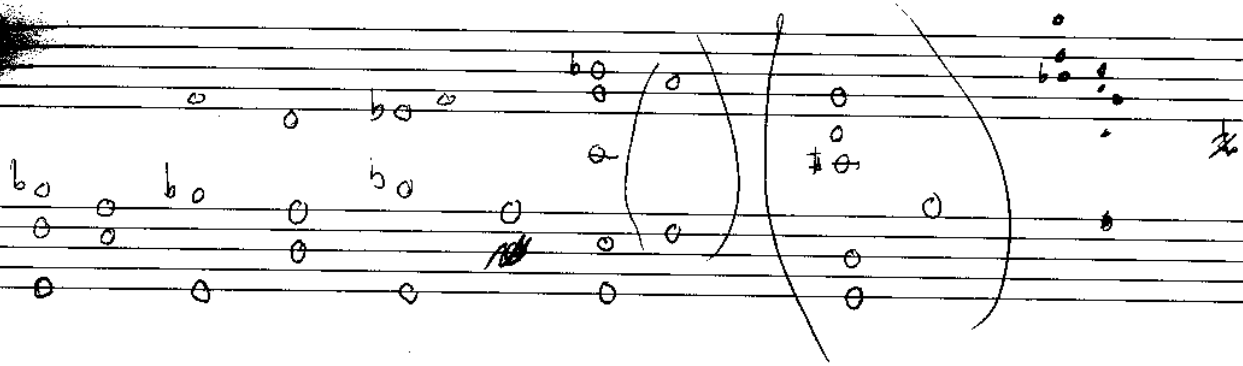
UNT 1126



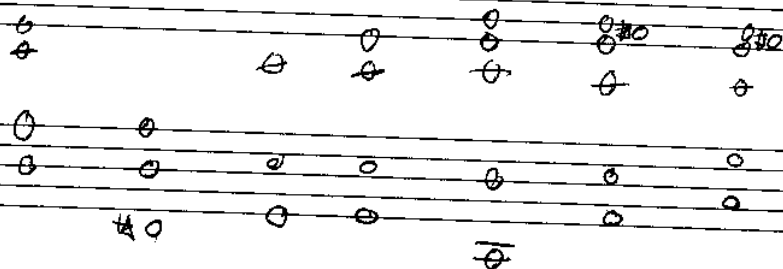
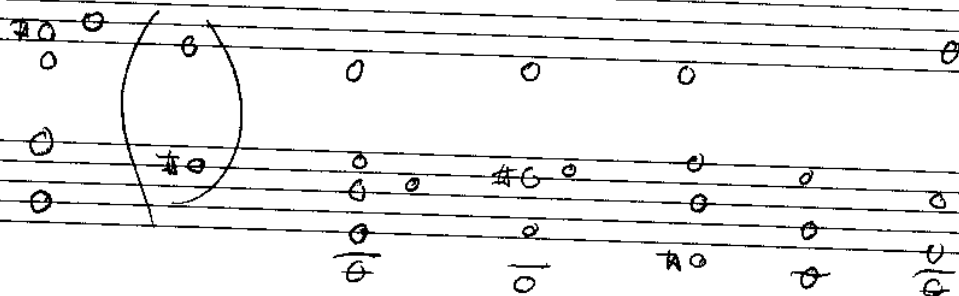
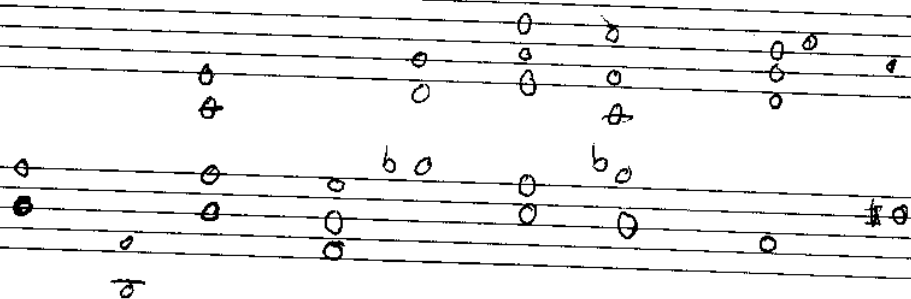
UNTITLED



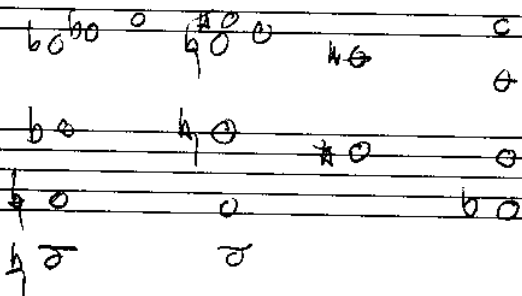
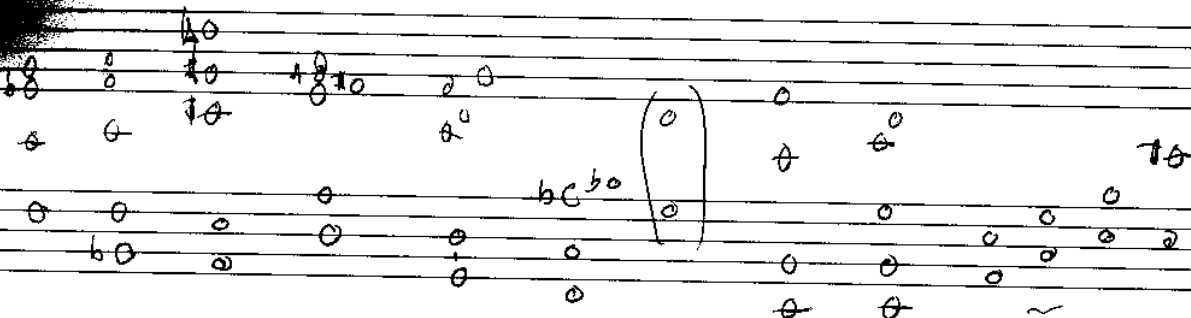
UNTITLED



UNTITLED



UNTITLED



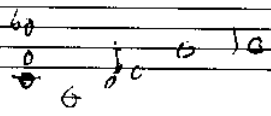
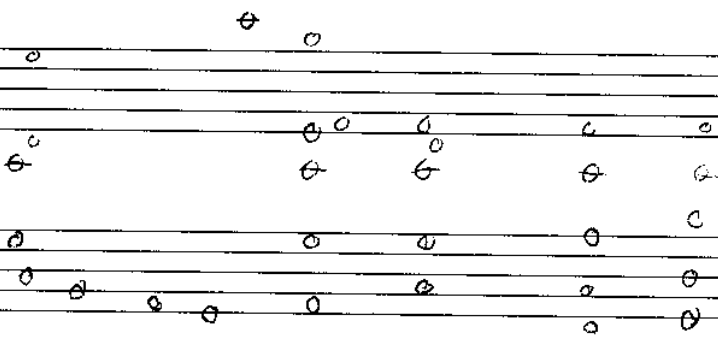
B^b

UNTITLED

Handwritten musical notation on five staves. The notation includes various notes, rests, and accidentals (sharps, flats, and naturals). The first staff begins with a treble clef and a key signature of one flat (B^b). The notation is written in a fluid, handwritten style, with some notes and accidentals appearing to be corrections or additions. The second staff continues the melody, featuring a sharp sign and a flat sign. The third staff shows a series of notes with a sharp sign and a flat sign. The fourth staff has a treble clef and a key signature of one flat (B^b). The fifth staff continues the melody with a flat sign and a sharp sign. The notation is written on five staves, with the first staff having a treble clef and a key signature of one flat (B^b).

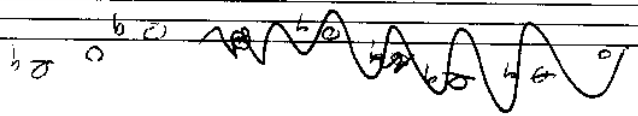
UNTITLED

re



50

60



60

70

80

60

70

80

90

100

60

70

80

90

100

60

